



S32: unique 32 meters crawler lift available in the worldwide with double articulating telescopic boom with jib!

Strong and robust, with big outreach of 16 metres and impressive up and over reach. Height adjustable track system. Multi position and auto levelling stabilisers.

A compact and narrow tracked crawler. Technology S.C.S. by CMC for the optimal management of the machine. Different working areas with versatile operation and the ability to reach below ground level. 220 kg capacity on basket.



REV 3.17 artimedia





JIB 140'



S.C.S. (Self Control System)



Towable Transportable



Radio Controlled



OPTIONAL
Self Loading System



OPTIONAL
Hybrid Series



OPTIONAL
Dual Voltage AC Motor



Simple to use

User-friendly, with intuitive 4-step operation from start to working at height.

Power options

Kubota Z842 diesel engine. As optional: electric engine of 380V or 220V or 120V, lithium power batteries with electric motor, hybrid version (diesel + battery).

Service friendly

Simple operating system with fault code diagnosis and easy to repair on-site.

Full Performance

The tracked aerial platform that will surprise you. Equipped with double articulated and telescopic booms and jib technology.

Versatile

Equipped with one articulating and two telescopic lower boom sections, one articulating and one telescopic boom upper boom sections and movable jib.

Towable Transportable

Low weight and very compact, so suitable to tow on a trailer behind mid-size vans and 4x4 vehicles.

PERFORMANCE

Max working height	32,00 m
Max working outreach	16,00 m(<120kg)
Max load on the basket	220 kg
Jib movement	140°
Turret rotation	± 200° (Tot. 400°)
Basket rotation	± 92° (Tot. 184°)
E Total length without basket	6,98 m
P Max slope to stabilize	8,3° / 15%
W Max ramp slope (attack)	16° / 29%
X Max slope to travel	19° / 34%
Z Max crawlers angle	15°
Max travel speed (low/fast)	0,54/1,24 km/h

DIMENSIONS

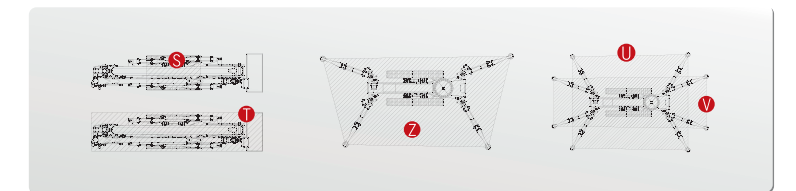
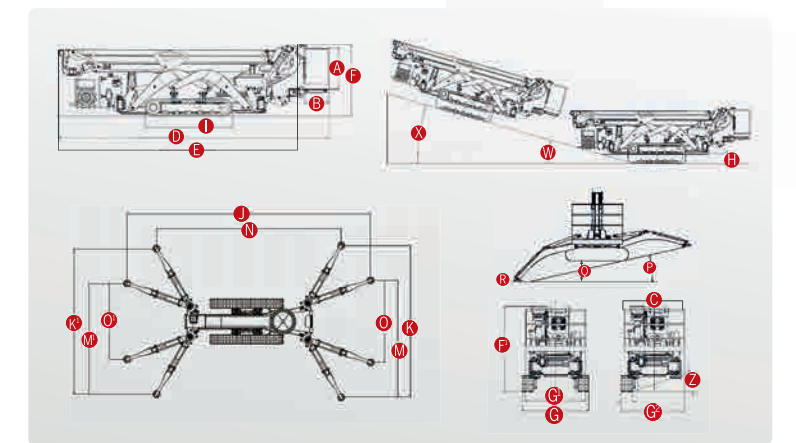
A Basket height	1,10 m
Max basket height (removed)	1,40 m
B Basket width	0,70 m
Max basket width (removed)	0,85 m
C Basket length	1,70 m
D Total length	7,78 m
F Height in driving position (with tracks lifted)	2,35 m
F ¹ Height in driving position	1,97 m
G Total width with tracks lifted	1,90 m
G ¹ Total width with tracks closed, boom extended and basket rotated	1,56 m
G ² Total width with one track closed, and one track lifted	1,73 m
H Free height from the ground	0,42 m
I Tracks (LxP)	2,45 x 0,32 m
J Max longitudinal stabilization	8,53 m
K Max cross stabilization (RT)	5,41 m
K ¹ Max cross stabilization (LT)	5,14 m
M Average cross stabilization (RT)	4,61 m
M ¹ Average cross stabilization (LT)	4,39 m
N Min longitudinal stabilization (RT)	6,52 m
O Min cross stabilization (RT)	3,80 m
O ¹ Min cross stabilization (LT)	3,56 m
Q Track height stabilization from the ground (machine stabilized at maximum height)	0,83 m
Stabilizer plate	0,24 m

WEIGHTS

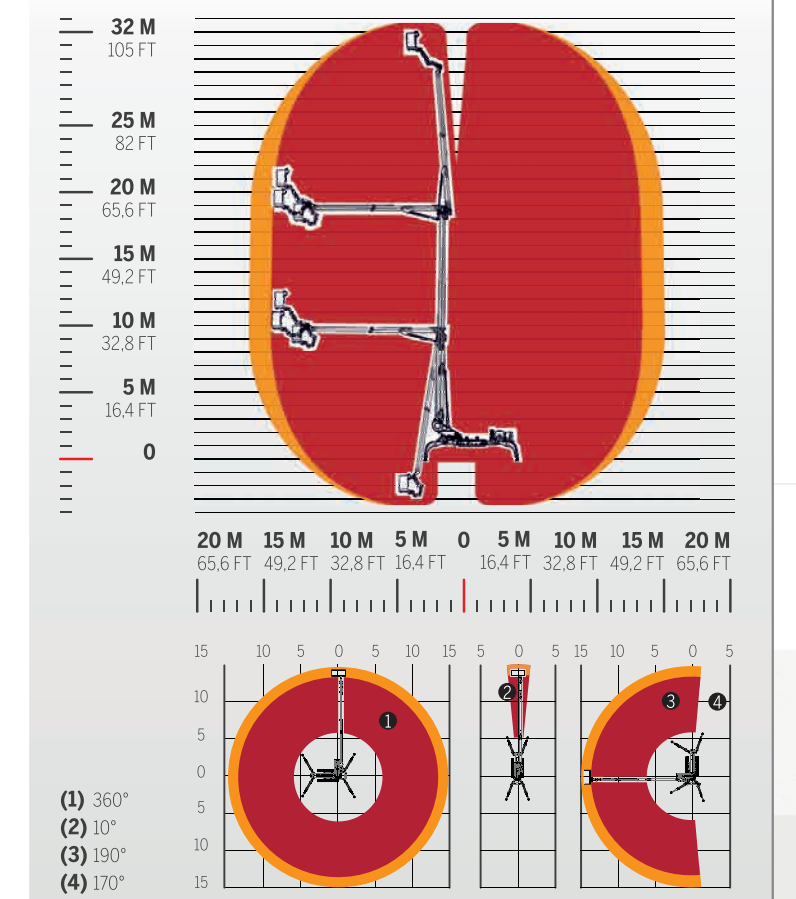
Total weight	7,280 kg/16,049 lb
R Max pressure on the foot	9,69 kg/cm ² - 95,1 N/cm ²
S Max pressure on the track	0,95 Kg/cm ² - 9,34 N/cm ²
T Max pressure in travel	492 Kg/m ² - 4,83 kN/m ²
U Max pressure in work ^{4 feet open pos.2}	206 Kg/m ² - 2,02 kN/m ²
V Max pressure in work ^{4 feet open pos.1}	224 Kg/m ² - 2,20 kN/m ²
Z Max pressure in work ^{2 feet closed + 2 feet open}	185 Kg/m ² - 1,81 kN/m ²

POWER

Standard power	
Diesel	D902-E3B; Kubota 16,1 kW
Fuel tank capacity	10 L



MAX LOAD 220 kg/485 lb 120 kg/265 lb



The outreaches of this diagrams are those at the edge of the basket. Work performances are to be considered conventionally increased 1m.