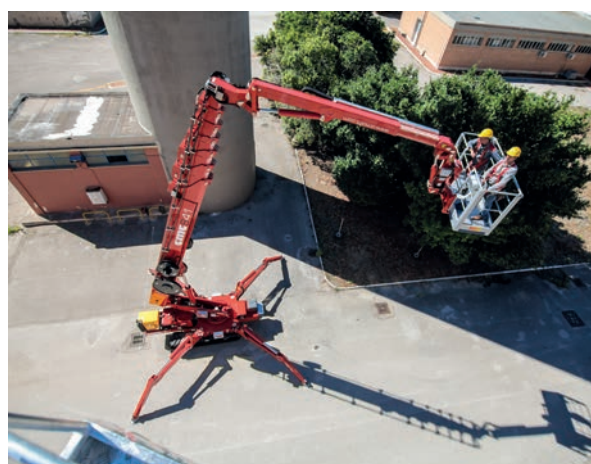


**Our largest and highest reach self propelled aerial work platform with 19m lateral outreach.**

The S41 work platform is built with 6 telescopic booms and articulating extendable telescopic jib, with 180° swivel and removable basket. Swivel outriggers with special articulated "knees" allow for an extremely compact travel package. The maximum basket capacity is 200kg.

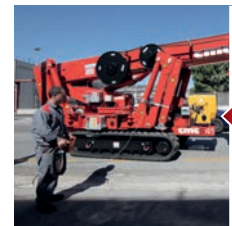


artimedia





**Hatz Silenced Engine**



**Remote Control Station**



**MEWP Performance Control/Info Display**



**"Dead Man" Safety Device in Basket**



SPECIFICATION

Max working height	41,0 m
Max lifting height	39 m
Max work outreach	16,0m
Platform capacity	200kgs
Turret rotation	Continuous
Boom rotation	360°
Basket rotation	+/- 90°
Articulating jib	90°
Stabiliser base area(min)	3,99 x 7,58m
Platform basket	2 x 0,8 x 1,1m
Minimum length	8,5m
Minimum width	2,1m
Minimum height	2,4m
Gross weight	13,400kgs



MAX LOAD

200 kg/441 lb

STABILIZZAZIONE  
 SMALL MEDIUM LARGE PORTATA MAX 200 KG

