



ثروة العربية للآليات

ARABIAN THARWA MACHINERY

 **EL DIDI GROUP**



6307 Ahmed Al Khatib Az
Zehra Dist.
Unite No.02 jeddah 23424 - 2412
Tel +966 549 175 073
CR 4030470839
VAT :311006120400003
www.eldidigroup.com

INTRODUCTION

Arabian Tharwa Machinery (Soilmec Arabia Co.) in the Kingdom of Saudi Arabia is responsible for the supply, service, and maintenance of Foundation Drilling Equipment's, Tools and Accessories as well as for the Water well, Oil and Gas sector, Under the supervision of EL DIDI HOLDING GROUP LTD. Arabian Tharwa Machinery (Soilmec Arabia Co.) along with the extensive network of El Didi Holding Group Ltd. has the experience and maintains a good business relation with Local & International Construction , Oil Companies as well as Governmental Institutions being the Sole agent of Soilmec SpA. It is highly competitive and wildly experienced in the construction industry up to date.



OUR SERVICE

Side by side with the customer. Over the course of their 26 years of operating experience Soilmec has created a recognizable brand that customers can rely on, knowing that they can count on a safe, dependable product that has been thoroughly tested on-site.

What's more, Customers benefit :

- Full assistance service, from first contact to technology sharing.
- From purchasing the equipment to on-site operating, from product personalization to staff training packages.
- Our after-sales service, with customer services available 24/7.
- Spare parts delivered in record time, problems solved in any situation, even in the most complicated circumstances. Because a satisfied customer is our greatest reward.



Mission and Vision

Mission

To pioneer in providing effective solutions and aftersales services in the loading foundation and construction machinery sectors.

Vision

Through supplying high-quality equipment, partnering with world leader companies and expanding worldwide, we ensure our clients' satisfaction.

Products

- Drilling & Foundation Machinery & Tunnel digging and all kinds spare parts drilling consumables.
- Mining equipment and Well drilling and perforating.
- Construction machinery & Concrete and Cement injection and Bentonite mixing.



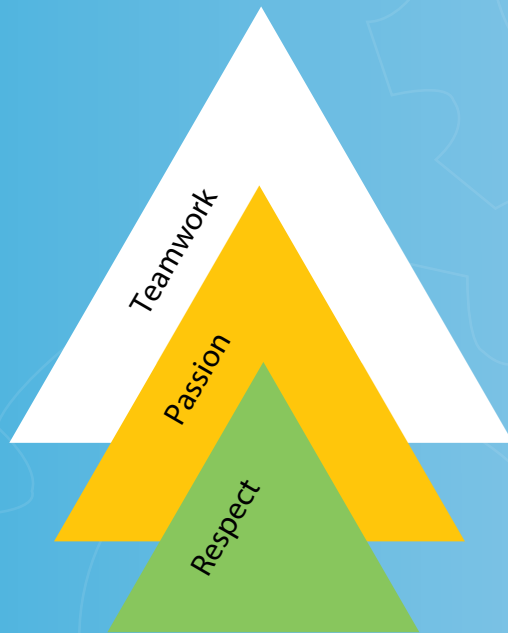
COMPANY OVERVIEW

In association with the following industry partners:-

- SOILMEC S.p.A. - Drilling & Foundation Equipment's
- BETEK - Drilling Teeth's (i.e. teeth, holder, welding bar, etc.) for Foundation Drilling.
- ITALDRAGHE - Dredgers, Dredge pumps, Cutter suction dredgers, Dredging heads,
- GEAX - Drilling & Foundation
- FUWA - Hydraulic Crawler Cranes
- FARESIN - Telescopic handler both for Construction and Agriculture Industry
- MECBO S.r.l. - Concrete Pumps and Mixers
- Teufelberger - Wire Ropes for Industrial Lifting, Elevators, Applications for both Offshore
- Barin - Railway service
- JEAN LUTZ - Measurement and control devices for monitoring ground improvement
- FRASTE - Hydraulic Drilling
- TOWER LIGHT S.r.l.- Manual Light Tower EIDidi T-8
- POWER LINK - Diesel Generator Sets
- EPE - Pipeline Equipment's
- SAICI - Bentonite (MUD) Desander, Turbo Mixer
- SUNWARD - Drilling Equipement
- Liugong - Excavators , Loader ,Trucks , Cutter , Dozers, other Equipment's
- Egymec Al-Wahbi Factory Co - Leading manufacturer in Auger, Drilling Tools, Kelly Bar.
- We have a service crew with excellent experience and training accessible around the clock to assist



VALUES



WINNING THROUGH TEAMWORK:

We encourage individual ownership, but work as a team.
We value the expertise, individuality and contribution of all colleagues,
Working in support of each other and readily sharing good practice, in
pursuit of shared goals.

SAFETY :

Ensuring a safe and healthy environment for our employees, clients and
the community.

OWNERSHIP:

We will make it happen and Count on us.

PASSION:

We do it right, with quality & we are proud of it.
We are passionate about delivering superior service and take pride in
achieving this. We look to replicate success, learn from mistakes and
develop the ideas, Innovation and practices that will help us improve and
lead our market.

RESPECT:

We keep our promises
We treat each other like we want to be treated ourselves
We respect the environment where we work.

INTEGRITY:

If it is not right, we don't do it If it is not true, we don't say it.

Soilmec is an international company leader in design, manufacture, and distribution of equipment for the ground engineering industry. The company was established in 1969 by entrepreneur Mr. Davide Trevisani as Pali Trevisani (today known as Trevi S.p.A.). Since its inception, Soilmec has always developed safe, innovative, cutting-edge technologies and provided the construction industry the full spectrum of equipment solutions.



The LGMRT ST120 surface top hammer drill features strong Cummins Diesel Engine that deliver pertinent power for hydraulics and compressor. An optimal power pack and highly productive LD120 (Sandvik HL710) hammer with outstanding percussive and rotational power bring excellent results in every hole size between 76-115mm (3" – 4½ "), mainly used for medium scale quarrying & mining. Percussion power is typically 20 kW and required flushing air amount up to 8.1 m³ (286 cfm).



BETEK is one of the leading manufacturers of tungsten carbide-tipped wear parts, tool systems and wear protection solutions. Our high quality specialty products are used in road milling, mining, foundation drilling, agricultural engineering, surface mining and recycling industries, as well as numerous other industries. Our headquarters is located in Aichhalden, Baden-Württemberg. This is where our entire tungsten carbide development and manufacturing process takes place. As the world market leader in carbide-tipped wear tools for foundation drilling, we offer you products that match your machine and the respective drilling task.

At the same time, they guarantee high feed rates, long service lives and short changeover times at high daily outputs.



Geax s.r.l has operated in the fields of design and construction of drilling machinery and equipment for piles. Geax machines show top-level performance and flexibility; adapting rapidly to the increasingly stringent requirements of the operators. Geax has a streamlined and efficient organizational structure that allows us to offer machines at competitive costs and to quickly adapt to market needs by developing new applications and special machines on customer request. GEAX is revolutionizing the foundation drilling machine market by offering innovative products with reliable support and quality.



STA has been designing and producing special hydraulic equipment for the construction industry and for the naval industry for more than thirty years. We are also present on the market with a wide range of customized applications and prototypes. Different fields with common guidelines: high quality and high reliability. In the naval sector we are specialized in the production of cargo systems as stern doors, internal ramps and openings to hull for RO-RO and ships. For the construction industry we produce grouting equipment as for injectors, grouting pumps, mixing unit for grouting, jet-grouting, chemical injection and vibroflotation equipment for vibrocompaction and stone columns, power packs.

STA also applies to his equipments a complete range of automation and data logger systems.





Shantui Construction Machinery Co., Ltd. is formerly Yantai Machine Factory, which was founded in 1952 and relocated to Jining and renamed to Jining Machine Factory in 1966. In 1980, Jining Machine Factory, Jining General Machinery Factory, and Jining Power Machinery Factory were merge to form Shantui Bulldozer General Factory. Shantui Construction Machinery Co, Ltd. was founded in 1993 and was publicly listed at Shenzhen Stock Exchange in January, 1997 ("Shantui Stock"; code: 000680}. It's one state-owned public listed company and is one subsidiary company of Shandong Heavy IndustryGroup.



**STANDARD MOTOR
GRADER SG27-C5**

**FORKLIFT
SF25/30/35**



**EXCAVATOR
SE370LC**

**STANDARD LOADER
L55-C5**



**BULLDOZER
SD32**



Italdraghe SpA, established in the middle of the last century, has gathered decades of experience becoming one of the most known dredgers, dredging solutions and marine equipment worldwide. The keywords for Italdraghe have always been quality, reliability, commitment and customer centricity: the raw materials are accurately chosen, the design is thought such to satisfy clients' needs and the company is always committed to keep the customer at the center of its activity.



Our Founder is at the source of SUNWARD's DNA

The source of Sunward's DNA lies with its founder, Professor He Qinghua. A forward thinker, Professor He is anchored in a very solid university and research background, and he is driven to cultivate himself and constantly improve. Professor He has registered 252 patents, and his entrepreneurial spirit led him to create Sunward in 1999.

Sunward today

As a highly technical engineering company, Sunward's strategy is to deploy and demonstrate its strengths and innovations at the heart of the equipment manufacturing industry through 3 solid pillars: Construction, Special & Rescue Equipment, and Aviation. In 20 years, SUNWARD has become one of the Top Global Companies in constructions.





FUWA Global Heavy Industry Co., Ltd, located in Fushun City, the North-East of China, is one famous manufacturer for engineering & construction equipment. FUWA Group was set up in 1904, and is the only manufacturer in China with the longest history of construction equipment, and made a huge contribution in the industry sector. FUWA attracts more professional graduated staff and engaging smart co-operations with foreign companies and experts, updating the manufacturing facility with new technology inside each workshop. FUWA always provides the products with good quality for all the clients, and still develops new products with the latest technology, such as (Crawler Crane , Crane Spare Parts , Engine Spare Parts ,Machinery Parts , Machinery After Service ,Generator and Engine) FUWA has the perfect organization with much efficiency to ensure the completion of continuous development.



TEUFELBERGER- Redaelli is a diversified, international groupsuccessfully specializing in fiber ropes, steel wire ropes and strapping. Innovation, steady growth, and geographic expansion are firmly defined goals in the group strategy. Our products are in use around the globe. They range from high performance steel wire ropes for various applications on cranes to premium steel wire ropes for use in mining and on ropeways, fiber ropes for various industrial applications, rescue and safety ropes and equipment, ropes for forestry work, fiber ropes and tools for arboriculture, lines and accessories for different boat types, and PP and PET strapping.



El Didi Group introduce a new lighting tower with vertical mast. Compact and robust the KB2 is the ideal product Model Phase power Max Extension Metal halide Lamps Wind speed resistance for constructions sites, rental, oilfields, civil defense, events, drilling and mining sites. KB2 is equipped with Kohler-Lombardini engine and its able to illuminate more than 4000sq.m due to the hi-res 1000W metal halide lamps mounted on it. With KB3 El Didi Tower you have the possibility to connect the machine to an external power source such as the KB2 El Didi Tower. only (1) Generator permits to run 2 light towers. Maximum the number of units that can be placed on a truck (32 unit), giving a significant Reduction in transport costs.



KB2

KB3

Special Lighting Tower

Faresin Industries, headquartered in Breganze (VI), designs, manufactures and markets mixer wagons and ration analysis instruments for the livestock sector and telescopic handlers for agricultural and industrial use. Faresin means quality products all over the world, products stand out for their Made-in-Italy quality.



EURO PIPELINE EQUIPMENT PIPELINE SOLUTIONS ALL OVER THE WORLD.

Euro Pipeline Equipment design, manufacture and export a full range of pipeline equipment well known in the most important onshore pipeline projects around the world.

Euro Pipeline Equipment is your partner in each phase of site construction.

The production is fully inside the company and we promote the sale and the rental of the machineries and pipeline equipments.



S.A.I.C.I. has been active for over 30 years in the field of design and construction of machines and special systems for industry and the construction sector.

S.A.I.C.I. machines and systems, in the most varied and demanding applications, have made their mark worldwide due to their high technological content, innovation quality and service.





Experience, quality, performance, reliability, low maintenance systems and high customer satisfaction are synonymous with the Fraste name around the world. We ensure you get the parts you need by stocking commonly used inventory, and are expert at expediting fast shipment from the factory when required. Fraste offers a wide range of rotary drills for many industries, including Geothermal, Geotechnical Environmental, Water Well, Construction and Mining.



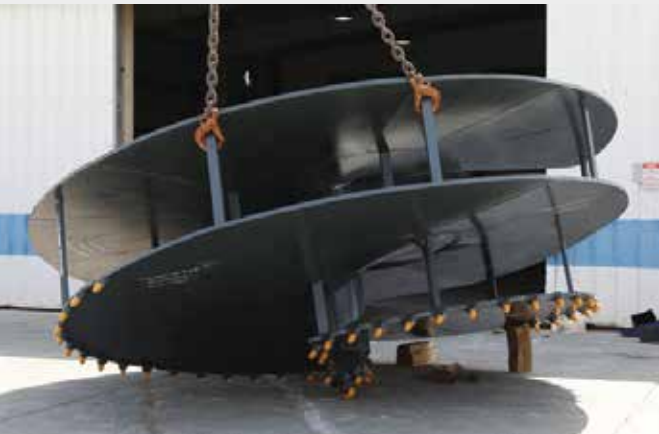
Fraste MultiDrill XL Series



FRASTE MX SERIES



Universal Augers LTD was established in 1990. It became subsidiary of pengo corporation inc. US based Augers & accessories manufacturer in 1993. Dr A.F Eldidi (Chairman of the board) bought 100% shares of Universal Augers Gulf FZCO & Universal Augers Shanghai, China representative office in 12/12/2012 , In 2004 Universal Augers was awarded the ISO 2001 accreditation . Products Universal Augers Gulf FZCO is Committed to Design, Develop & Manufacture high Quality Equipment, tools & accessories for foundation engineering & drilling industry. We are the largest supplier in MENA region for Piling, mining, screw conveyor, road construction, offshore & marine industry





a perfect machine at any time. the solution to your pumping needs is ready-to-ship. we offer a wide range of our best products for prompt delivery to guarantee you the best experience.



CRAWLER MOUNTED PUMBS

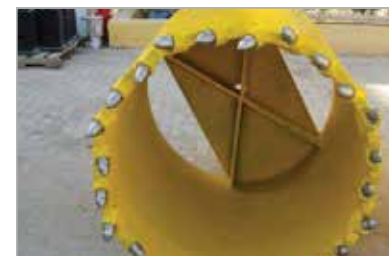
To be able to respond to urgent requests for specific machinery to use on building sites, we provide the six most common types of concrete pumps that are available at any time. all mecbo's made in italy quality and innovation is immediately accessible thanks to the continuous restocking of our machine park, guaranteeing you the timeliness that distinguishes us also when it comes to supplying you with your new concrete pump.

TRUCK MOUNTED PUMBS

Pump installed on 3-axle truck with a total weight of less than 26 tons, and maximum length of less than 11m. equipped with a 33m high placing boom with four x rkinematic sections, and a pumping unit capable of delivering up to 110 m³/h and 70 bar at the outlet. can be installed on crawlers,wheels, trucks or tracks.



EGY MEC is a leading solution provider for foundation engineering. EGY MEC 's main products include: kelly bars, drilling buckets & augers, drill bits, casings, tremie pipes, desanders, casing rotators and pile reakers, etc. our products have reached the advanced level in Middle East in terms of technology and quality. - Till now, our products have been exported to over 50 countries and regions such as the U. S, the U. K, Singapore, Indonesia, Mexico, Russia, the Middle East and South America, etc, and have been praised unanimously by customers.



Pile Breaker PB

For construction needs, the consolidation piling protrude out from the ground by one or two meters, therefore they must be removed in order for building work to begin. Mantovanibenne Pile Breakers solves this problem by crushing the foundation piles quickly and accurately leaving the rebar and the structural integrity of the pile itself intact.

Silent attachment

By using the Pile Breaker the restrictive environmental regulations are respected especially with regards to the noise on construction sites. Modularity The attachment has been designed using a Modular System concept (linked modules) which allows the demolition of both round and square piles. By varying the number and the type of module it is possible to obtain an attachment which is suitable for any specific working operation with maximum flexibility. SQUARED PILES Pile Breaker.

Lifting kit

The Pile Breaker is supplied with a lifting kit to be connected to the excavator. Pipe protection The special shape of the Pile Breaker is also designed to ensure the protection of the hydraulic system in every working condition. Tip kit Each module is supplied with a kit complete with three cylinder tips.

Modularity

The attachment has been designed using a Modular System concept (linked modules) which allows the demolition of both round and square piles. By varying the number and the type of module it is possible to obtain an attachment which is suitable for any specific working operation with maximum flexibility.



SKC MAKĪNA brand is under SKC Engineering Company which established in 2013, is a manufacturer of machinery and equipments and aims to be a leader in its sector. SKC MAKĪNA has been serving the design, production, sales and after-sales service areas for the continuously changing and developing customer needs and has made customer satisfaction the principle of priority by using the technologies of its own welded and machined manufacturing, mechanical, hydraulic and electrical automation fields. SKC MAKĪNA, whose activities are honest, respectful, humanistic and based on high quality principles, will continue to serve our customers.



For the past six decades, LiuGong has learned, adapted and grown into an established name in machinery. Started in 1958, LiuGong brought the first modernized wheel loader to China in 1966, eventually expanding to 19 different product lines today. Attention to quality and the ability to get the job done has made LiuGong synonymous with reliability. With 20 manufacturing facilities, over 10000 employees, 5 R&D bases as well as 17 regional parts centres, LiuGong stays at the forefront of technology, production and supply logistics.



PARTNERS

soilmeco

FUWA



JL JEAN LUTZ

BETEK

FRASTE

SALGI

SA

VIBRO & GROUTING EQUIPMENT

ELDIDI TOUVERIGHT

ITALDRAGHE
DREDGING AND PUMPING SOLUTIONS

SHANTUI

FARESIN

MECBO

ep9
EPO EQUIPMENT

SKC
Makina

UNIVERSAL
Augers Gulf FZCO

MBI

SUNWARD

GEAX

Teufelberger · Rodaelli

LIUGONG

LGMRT
临工矿山

CONTACT US

SAUDIA -HEAD OFFICE

Arabian Tharwa Machinery
6307 Ahmed Al Khatib Az Zahra Dist.
Unit No.02 Jeddah – KSA 23424-2412
Phone: +966 122 064 635
Email: info@arabiantharwa.com

Eastern Region:
Tel : +966 566 563 224
Email: info@arabiantharwa.com

Neom Service Center:
Tel : +966 50 778 6954

Main Store and Workshop Address:
Arabian Tharwa Machinery Warehouse
AS Sarawat – Kumrah, King Faisel Road
Al Esayi Stores -102, Store No 12

EMIRATES

Soilmec Emirates L.L.C.
Dubai – U.A.E.
Tel : +97143451881
Fax : +97143451886
Email : soilmec@emirates.net.ae

Soilmec Gulf FZCO – JAFZA
Jebel Ali, Dubai – U.A.E.
Tel : +97148833666
Fax : +97148833667
Email : soilmec2@emirates.net.ae

Universal Augers Gulf FZCO – JAFZA Jebel Ali,
Dubai – U.A.E.
Tel : +971 4 8831755
Fax : +971 4 8831756
Email : uniauger@emirates.net.ae

EGYPT

GROUP OFFICE BUILDING
50 Elmoltaqa El Araby st,
Cairo, Egypt
P.O. Box:11799 Sheraton
Phone: +20 2 20644270
Fax. : +20 2 20644277
Email : info@eldidigroup.com